



**India Meteorological Department  
(Ministry of Earth Sciences)**

**NATIONAL BULLETIN NO. 05**

**TIME OF ISSUE:0830 HOURS IST**

**DATED: 31.01.2023**

**FROM: INDIA METEOROLOGICAL DEPARTMENT (FAX NO. 24643965/24699216/24623220)**

**TO: CONTROL ROOM, NDM, MINISTRY OF HOME AFFAIRS (FAX.NO. 23093750)**

**CONTROL ROOM NDMA (FAX.NO. 26701729)**

**CABINET SECRETARIAT (FAX.NO.23012284, 23018638)**

**PS TO HON'BLE MINISTER FOR S & T AND EARTH SCIENCES (FAX NO.23316745)**

**SECRETARY, MOES (FAX NO. 24629777)**

**H.Q. (INTEGRATED DEFENCE STAFF AND CDS) (FAX NO. 23005137/23005147)**

**DIRECTOR GENERAL, DOORDARSHAN (23385843)**

**DIRECTOR GENERAL, AIR (23421105, 23421219)**

**PIB MOES (FAX NO. 23389042)**

**UNI (FAX NO. 23355841)**

**D.G. NATIONAL DISASTER RESPONSE FORCE (NDRF) (FAX NO. 26105912, 2436 3260)**

**DIRECTOR, PUNCTUALITY, INDIAN RAILWAYS (FAX NO. 23388503)**

**CHIEF SECRETARY, ANDAMAN & NICOBAR ISLANDS (FAX NO. 03192- 232656)**

**CHIEF SECRETARY, GOVT. OF TAMIL NADU (FAX NO. 044-25672304)**

**CHIEF SECRETARY, GOVT. OF PUDUCHERRY (FAX NO. 0413-2337575, 2334145)**

**CHIEF SECRETARY, GOVT. OF KERALA (FAX NO. 0471-232716)**

**Sub: Depression over Southwest Bay of Bengal**

The Depression over Southwest & adjoining Southeast Bay of Bengal moved nearly west-northwestwards with a speed of 11 kmph during past 6 hours and lay centered at 0530 hours IST of today, the 31<sup>st</sup> January, 2023 over Southwest Bay of Bengal latitude near 8.2°N and longitude 84.7°E, about 380 km east-southeast of Trincomalee (Sri Lanka) and 610 km east-southeast of Karaikal (India).

It is very likely to move nearly westwards till evening of today, the 31<sup>st</sup> January. Thereafter, it is likely to recurve gradually west-southwestwards and cross Sri Lanka coast between latitude 7°N to 8°N during forenoon of 01<sup>st</sup> February 2023.

**Forecast track and intensity are given below:**

<b>Date/Time(IST)</b>	<b>Position (Lat. °N/ long. °E)</b>	<b>Maximum sustained surface wind speed (Kmph)</b>	<b>Category of cyclonic disturbance</b>
31.01.23/0530	8.2/84.7	45-55 gusting to 65	Depression
31.01.23/1730	8.1/83.5	45-55 gusting to 65	Depression
01.02.23/0530	7.8/82.3	45-55 gusting to 65	Depression
01.02.23/1730	7.1/81.3	40-50 gusting to 60	Depression
02.02.23/0530	6.4/80.3	40-50 gusting to 60	Depression

**Warnings:**

**(i) Rainfall (warning graphics enclosed)**

- ❖ Light/moderate rainfall at most places with isolated heavy rainfalls very likely over south Tamil Nadu on 1<sup>st</sup> and 2<sup>nd</sup> February.

**(ii) Wind warning:**

❖ **Southwest Bay of Bengal:**

- Squally wind with speed reaching 45-55 kmph gusting to 65 kmph during 31<sup>st</sup> January to 1<sup>nd</sup> February.
- Squally wind with speed reaching 40-50 kmph gusting to 60 kmph on 2<sup>nd</sup> February.

❖ **Along & off Sri Lanka coast:**

- Squally wind with speed reaching 45-55 kmph gusting to 65 kmph during 31<sup>st</sup> January to 1<sup>nd</sup> February.
- Squally wind with speed reaching 40-50 kmph gusting to 60 kmph on 2<sup>nd</sup> February.

❖ **Gulf of Mannar and Comorin area and along & off south Tamil Nadu & Karaikal coasts:**

- Squally wind speed reaching 40-50 kmph gusting to 60 kmph during 1<sup>st</sup> to 2<sup>nd</sup> February.

❖ **Along & off north Tamil Nadu & Puducherry coasts:**

- Strong wind speed reaching 30-40 kmph gusting to 50 kmph during 1<sup>st</sup> to 2<sup>nd</sup> February.

**(iii) Sea condition**

❖ **Sea condition is likely to be rough to very rough**

- Southwest Bay of Bengal and along & off Sri Lanka coast during 31<sup>st</sup> January to 2<sup>nd</sup> February.
- Gulf of Mannar and adjoining Comorin area and along & off south Tamil Nadu coast during 1<sup>st</sup> and 2<sup>nd</sup> February

❖ **Sea condition is likely to be moderate to rough**

- Along and off north Tamil Nadu & Puducherry coasts during 1<sup>st</sup> and 2<sup>nd</sup> February.

**(iv) Fishermen Warning (warning graphics enclosed)**

Fishermen are advised not to venture into:

- ❖ Southwest Bay of Bengal, Gulf of Mannar, Comorin Area and along & off Sri Lanka and south Tamil Nadu & Karaikal coasts till 2<sup>nd</sup> February.

Fishermen out at sea off Tamil Nadu coasts are advised to return to the coasts by 31<sup>st</sup> January.

**The system is under continuous surveillance and the next message will be issued at 1130 hours IST of today, the 31<sup>st</sup> January, 2023.**

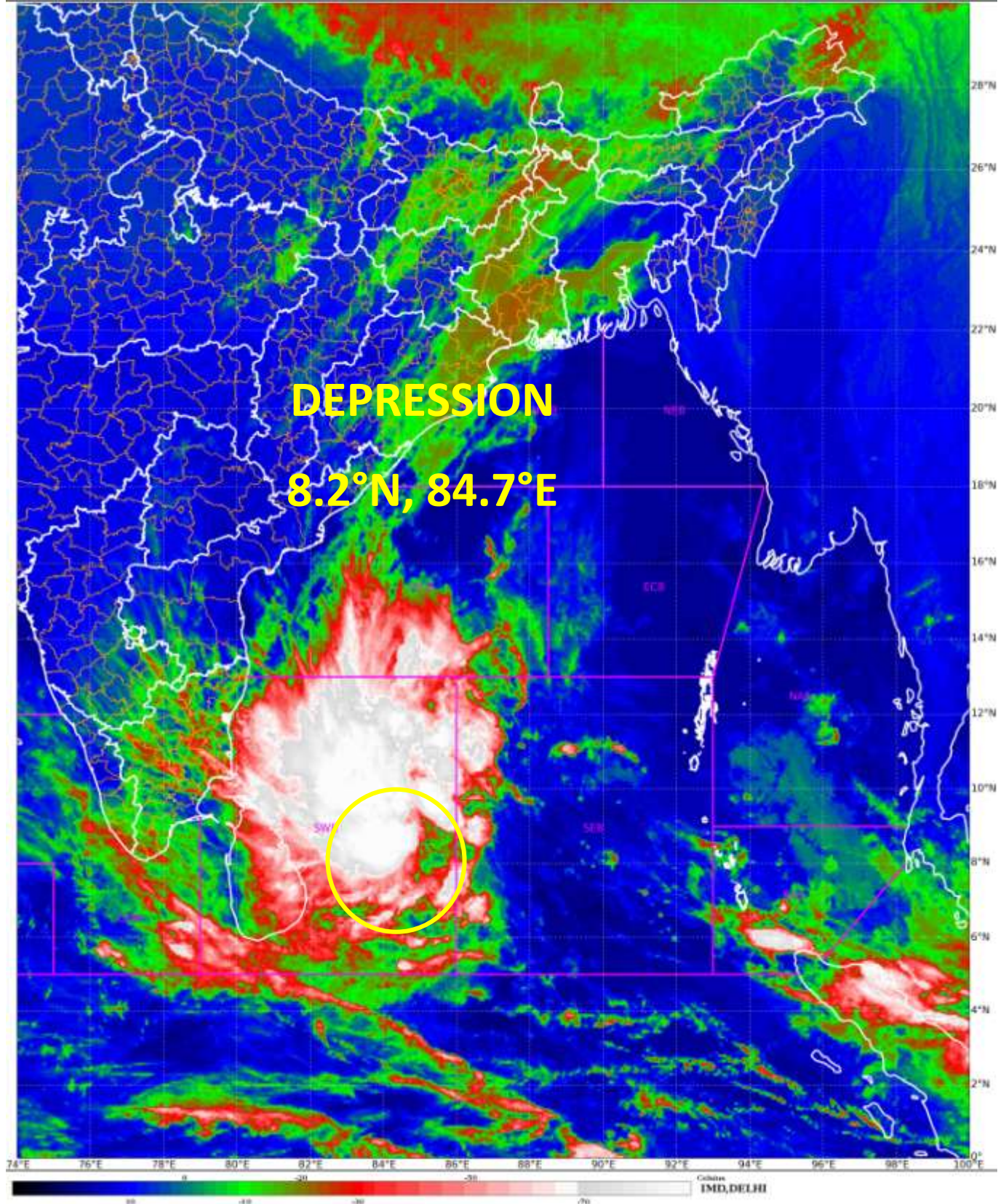
**(S. P. Singh)**  
**Scientist C, Cyclone Warning, New Delhi**

*Copy to: ACWC Kolkata/ ACWC Chennai/ CWC Bhubaneswar/CWC Visakhapatnam/MO Port Blair*

**LEGEND: Heavy Rainfall:** 64.5 to 115.5mm, **Very Heavy Rainfall:** 115.6 to 204.4mm **Most Places:** more than 76% of total stations, **Isolated Places:** Less than 25% of total

SAT : INSAT-3D IMG  
IMG\_TIR1\_TEMP 10.8 um  
LIC Mercator

31-01-2023/(0100 to 0126) GMT  
31-01-2023/(0630 to 0656) IST





**OBSERVED AND FORECAST TRACK OF DEPRESSION OVER SOUTHWEST BAY OF BENGAL BASED ON 0000 UTC OF 31<sup>st</sup> JANUARY, 2023.**



**DATE/TIME IN UTC**

**IST=UTC + 0530**

**L: LOW PRESSURE AREA**

**WML: WELL MARKED LOW PRESSURE AREA**

**D: DEPRESSION (17-27 KT)**

**DD: DEEP DEPRESSION (28-33 KT)**


**CS: CYCLONIC STORM (34-47 KT)**


**SCS: SEVERE CYCLONIC STORM (48-63KT)**


**VSCS: VERY SEVERE CYCLONIC STORM (64-89 KT)**

**ESCS: EXTREMELY SEVERE CYCLONIC STORM (90-119 KT)**

**SuCS: SUPER CYCLONIC STORM ( $\geq$  120 KT)**


 **LESS THAN 34 KT**

 **34-47 KT**

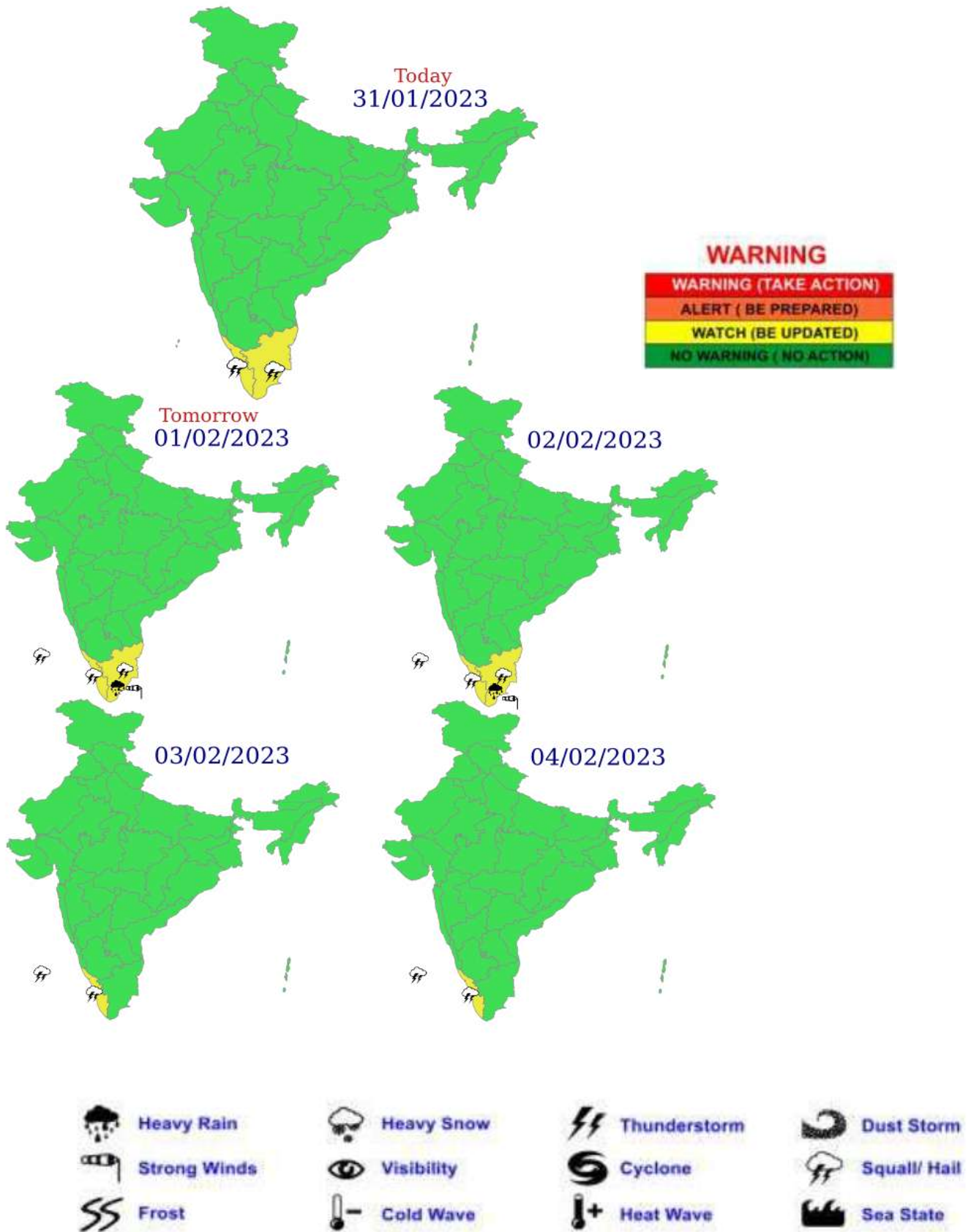
  **$\geq$  48 KT**

 **OBSERVED TRACK**

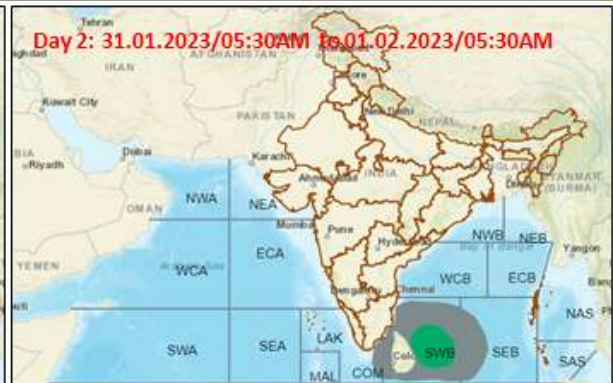
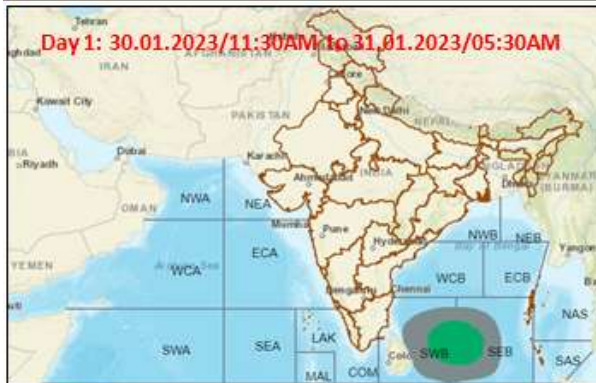
 **FORECAST TRACK**

 **CONE OF UNCERTAINTY**

# Multi hazard Warning Graphics



## Fishermen warning graphics



- Squally WX with wind speed 40-45 kmph gusting to 55 kmph
- Squally wind speed 45-55 kmph gusting to 65 kmph

**Fishermen are advised not to venture into the marked areas.**